

BE46

a solution for you...

..a problem for our competitors!

PROGRAMMABLE GENERATOR CONTROLLER
State of the Art Digital Generator Controller

The Be46 includes all functions needed to control and monitor a generating set. Its programming runs quickly, and all parameters, alarms and operating functions are indicated by means of messages and symbols. The Be 46 includes interface with an Oil and Temperature gauge, Fuel sender, and a magnetic Pick-up or 'W'. It provides 'AUTO', 'MAN', and 'OFF' operating modes. Measurements include Vac, Aac, Vdc, kVA, kVar, kW, Pf, Hz, Vdc, hour count, R.p.m., Oil Pressure, Engine Temperature and Fuel Level. A windows XP® compatible remote monitoring and control software program is provided.

BE 46
Genset & Engine
protection module.

Key features:

- 44 Programmable parameters and settings
- 18 alarm messages, 12 operating messages
- 8 outputs, 8 switch inputs, 7 analog inputs
- Solid state, short circuit proof
- Up to 1000Vac / 9000Aac true R.M.S.
- Indicates Aac, Vac, RPM, Hz, Vdc, h
- Indicates Bar, °C, % Fuel, Kw, kVA, Pf
- Interfaces Pick-up or W, RS232, RS485
- 4 digit Display, 12 LEDs, 8 push-buttons
- Manual and Automatic operating modes
- Programable Automatic Periodic TEST
- Interfaces A.T.S. and A.M.F. modules
- DIN 98, temperature range -25/+70 °C
- 6Vdc up to 36Vdc supply, IP55

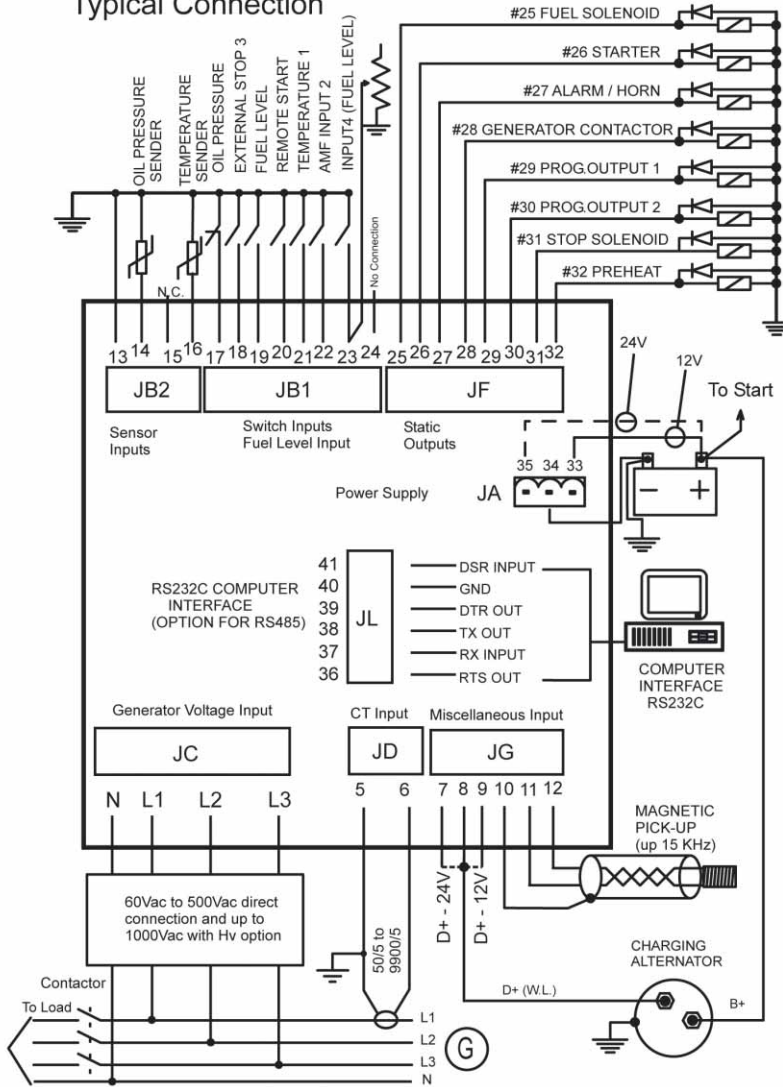


® Windows is a registered trademark of Microsoft Corporation

Available around the world in 48 hours

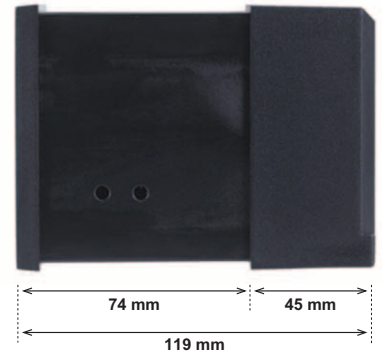
WIRING DIAGRAM

Typical Connection

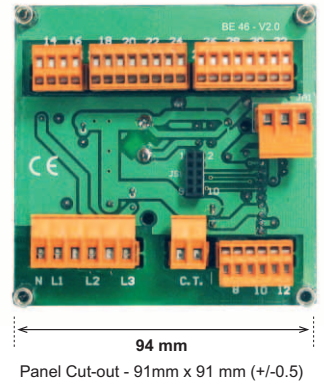


DIMENSIONS

SIDE VIEW



REAR VIEW



EASY SMS MONITORING



SOFTWARE SAMPLES

