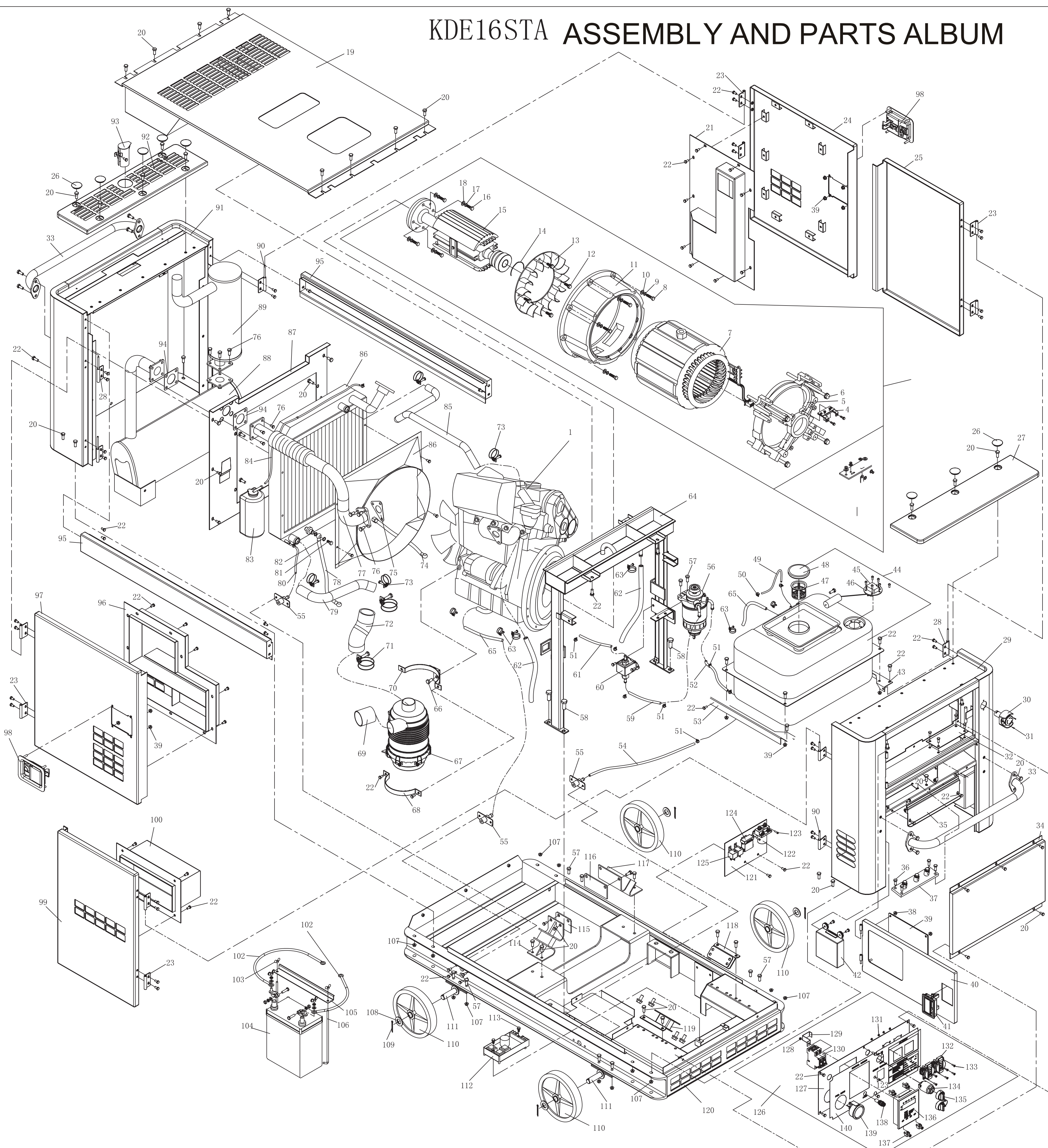


KDE16STA ASSEMBLY AND PARTS ALBUM



| No. | Part.No | Description | Qty. | No. | Part.No | Description | Qty. | No. | Part.No | Description | Qty. | No. | Part.No | Description | Qty. | No. | Part.No | Description | Qty. | No. | Part.No | Description | Qty. |
|-----|-----------------|--|------|-----|-----------------|-----------------------------------|------|-----|-----------------|--------------------------------|------|-----|----------------|--|------|-----|-----------------------|---|------|-----|----------------------|----------------------------|------|
| 1 | KM376AG-1000000 | Engine assembly | 1 | 25 | KDE19ST-07600 | Door board (3) assembly | 1 | 49 | KDE19ST-14002 | Return oil pipe of tank | 1 | 73 | QC/T619-1999 | Clip 38 | 4 | 97 | KDE19ST-07400 | Door board (1) assembly | 1 | 121 | KDE19ST-13601 | Relay bottom board | 1 |
| 2 | KDE19T3-02000 | Motor assembly | 1 | 26 | KDE35ST-04001 | Waterproof cover | 8 | 50 | QC/T619-1999 | Clip 9 | 2 | 74 | KM376-100 | Oil tube | 1 | 98 | KDE35ST-07100-M | Door lock assembly | 2 | 122 | QDC-100 DC12V | Preheat relay | 1 |
| 3 | KT245-03001 | Carbon brush | 2 | 27 | KDE19ST-04200 | Front column cover board welding | 1 | 51 | QC/T619-1999 | Clip 13 | 8 | 75 | KDE14T-11002 | Exhaust air pipe Gasket | 1 | 99 | KDE19ST-07700 | Door board (4) assembly | 1 | 123 | GB/T818-2000 | Screw M4X15 | 5 |
| 4 | KT245-03100 | Carbon brush subassembly | 1 | 28 | KDE19ST-07010 | Hinge (1) | 4 | 52 | KDE19ST-14001 | Delivery oil pipe of oil tank | 1 | 76 | GB/T5789-1986 | Bolt M8×30 | 11 | 100 | KDE19ST-07200 | Air road welding piece of door board (4) | 1 | 124 | BX2041C | Four line fuse box | 1 |
| 5 | KT245-00002 | Back-end cover | 1 | 29 | KDE19ST-04100 | Front column welding | 1 | 53 | KDE19ST-14011 | Right supporting board of tank | 1 | 77 | KDE14T-11200 | Flexible exhaust air pipe assembly | 1 | 101 | KDE19ST-13210 (Black) | Cathode wiring of battery | 1 | 125 | HFV4 12V 20A | Small type relay | 2 |
| 6 | GB/T5783-2000 | Bolt M10×220 | 4 | 30 | CE4T-10R-11 | Urgent stop button | 1 | 54 | KDE19ST-14005 | Drain oil pipe of tank | 1 | 78 | KM376-200 | Oil tube | 1 | 102 | KDE19ST-13210 (Red) | Anode wiring of battery | 1 | 126 | KDE14STAR230CE-13100 | Meter assembly | 1 |
| 7 | KT270-02000 | Stator assembly | 1 | 31 | GB/T818-2000 | Screw M3X12 | 2 | 55 | KDE60ST-03020 | Drain fuel pipe welding | 3 | 79 | KDE19ST-10004 | Outlet water pipe of water tank | 1 | 103 | GB/T62-1988 | Butterfly shaped nut M6 | 2 | 127 | KDE14STAR230Q-13110 | Instrument board | 1 |
| 8 | GB/T5782-2000 | Bolt M8×35 | 8 | 32 | KDE19ST-04004 | Cover board | 1 | 56 | DX200M | Water oil separator assembly | 1 | 80 | KDE19ST-10003 | Drain water pipe of water tank | 2 | 104 | 65AH-12V | Battery | 1 | 128 | GB/T6177.2-2000 | Nut M4 | 1 |
| 9 | GB/T93-1987 | Spring washer 8 | 8 | 33 | KDE19ST-04020 | Handle welding | 2 | 57 | GB/T5789-1986 | Bolt M8×20 | 10 | 81 | KM376G-1013102 | Bolt | 1 | 105 | KDE19T3-03002 | Pressed board of battery | 1 | 129 | KDE14T-13103 | Breaker bracket | 1 |
| 10 | GB/T97.1-2002 | Plain cushion 8 | 8 | 34 | KDE19ST-04001 | Front cover board | 1 | 58 | GB/T5789-1986 | Bolt M12×20 | 4 | 82 | JB982-1977 | Gasket | 7 | 106 | KDE19T3-03003 | Pressed board bolt | 2 | 130 | DZ47-63/1P C63 | Breaker | 1 |
| 11 | KT270-00001 | Front-end cover | 1 | 35 | KDE19ST-04002 | Junction box cover board | 1 | 59 | KDE19ST-14003 | Electric pump inlet tube | 1 | 83 | KDE19T3-10001 | Antifreeze pot | 1 | 107 | GB/T6177.1-2000 | Nut M8 | 16 | 131 | GB/T6170-2000 | Nut M4 | 8 |
| 12 | GB/T5783-2000 | Bolt M8×25 | 4 | 36 | GB/T5789-1986 | Bolt M6×20 | 4 | 60 | KDE388-10500 | Electric fuel pump II | 1 | 84 | KDE19ST-10002 | Overflow pipe of water tank | 1 | 108 | GB/T97.1-2002 | Plain washer 20 | 4 | 132 | 16A 250V | E-type receptacle | 2 |
| 13 | KT270-00003 | Fan | 1 | 37 | KDE14T-13500 | Output board | 1 | 61 | KDE19ST-14004 | Electric pump outlet tube | 1 | 85 | KDE19ST-10001 | Inlet water pipe of water tank | 1 | 109 | GB/T91-2000 | Cotter pin 3 | 4 | 133 | GB/T819.1-2000 | Screw M4×14 | 8 |
| 14 | GB/T894-1986 | Bearing retaining ring | 1 | 38 | GB/T6177.1-2000 | Nut M6 | 16 | 62 | KDE19T3-05002 | Drain water pipe | 2 | 86 | KDE19T3-10200 | Radiator Assembly | 1 | 110 | KDE19T3-03310 | Cartwheel | 4 | 134 | JK427-2 | Lock body | 1 |
| 15 | KT270-01000 | Rotor assembly | 1 | 39 | KDE19ST-04005 | Organic glass | 1 | 63 | QC/T619-1999 | Clip 20 | 6 | 87 | KDE19ST-10200 | Clapboard welding | 1 | 111 | KDE19ST-03200 | Wheel and axle welding piece | 2 | 135 | JK427-1 | Key | 2 |
| 16 | GB/T5782-2000 | Bolt M10×45 | 4 | 40 | KDE19ST-04300 | Meter door welding | 1 | 64 | KDE19ST-05000 | Center pillar assembly | 1 | 88 | KDE19ST-11100 | Muffler assembly | 1 | 112 | AVR-15-1 | Automatic voltage regulator | 1 | 136 | PLY-MB1-D | Intelligent display screen | 1 |
| 17 | GB/T93-1987 | Spring washer 10 | 4 | 41 | KDE12E-08350 | Door lock | 1 | 65 | KDE19ST-01004 | Oil Draining Pipe | 2 | 89 | KDE19ST-11200 | Muffler welding piece | 1 | 113 | GB/T5789-1986 | Bolt M5×40 | 2 | 137 | KDE6700TA-13410 | Monitor location assembly | 4 |
| 18 | GB/T97.1-2002 | Plain cushion 10 | 4 | 42 | PLY-MB3-C | Intelligent control module | 1 | 66 | GB/T5789-1986 | Bolt M10×12 | 2 | 90 | KDE19ST-07020 | Hinge (2) | 4 | 114 | KDE19T3-12200 | Right damping cushion of engine | 1 | 138 | BX201C | Fuse seat | 1 |
| 19 | KDE19ST-08100 | Top board cover welding | 1 | 43 | KDE19ST-14012 | Left supporting board of oil tank | 1 | 67 | KM376AG-1109000 | Air Cleaner Assembly | 1 | 91 | KDE19ST-06100 | Back boarding welding | 1 | 115 | KDE19T3-12001 | Suspension right backing board of diesel engine | 1 | 139 | 8111-12V | Oil meter | 1 |
| 20 | GB/T5789-1986 | Bolt M8×16 | 64 | 44 | KDE19T3-14000 | Oil tank assembly | 1 | 68 | KDE19ST-01001 | Air filter fixed board | 1 | 92 | KDE19ST-06200 | Cover board welding of back boarding | 1 | 116 | KDE19T3-12002 | Suspension left backing board of diesel engine | 1 | 140 | KDE14STAR230CE-13110 | PVC Label | 1 |
| 21 | KDE19ST-07100 | Air line welding piece of door board (2) | 1 | 45 | GB/T818-2000 | Screw M5×10 | 5 | 69 | KDE19ST-01002 | Vent pipe of air filter | 1 | 93 | KDE19T3-11300 | Vent pipe cap | 1 | 117 | KDE19T3-12300 | Left damping cushion of engine | 1 | | | | |
| 22 | GB/T5789-1986 | Bolt M6×12 | 104 | 46 | KDE19T3-14017 | Oil mass sensor | 1 | 70 | KDE19ST-01010 | Air filter fixed board welding | 1 | 94 | KDE19T3-11001 | Gasket of exhaust pipe (asbestos) | 2 | 118 | KDE19ST-12100 | Damping cushion (1) of generator | 1 | | | | |
| 23 | KDE19ST-07012 | Fixing plate | 8 | 47 | KM168F-10004 | Oiling filter screen | 1 | 71 | QC/T619-1999 | Clip 51-70 | 2 | 95 | KDE19ST-08001 | Decorative board of top cover | 2 | 119 | KDE19ST-12200 | Damping cushion (2) of generator | 1 | | | | |
| 24 | KDE19ST-07500 | Door board (2) assembly | 1 | 48 | KDE19T3-14200 | Oil Tank cover | 1 | 72 | KDE19ST-01003 | Engine inlet pipe | 1 | 96 | KDE19ST-07300 | Air line welding piece of door board (1) | 1 | 120 | KDE19ST-03100 | Chassis welding piece | 1 | | | | |